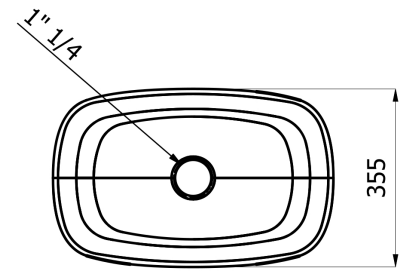
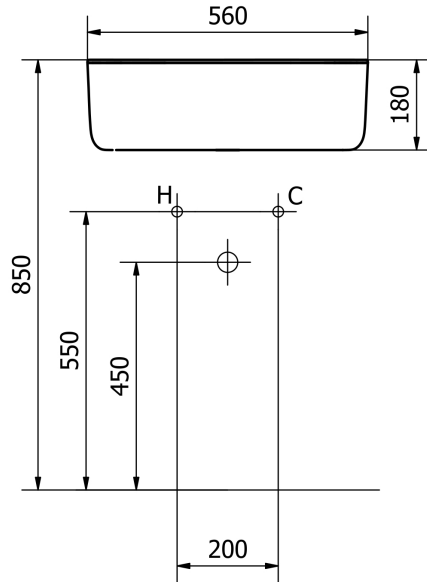


## product technical sheet

collection	<b>BOUNCE</b>
code	<b>EVLACPBOU</b>
description	Washbasin in Cristalplant
certifications	TUV system certification UNI EN ISO 9001. Compliant to the Regulation 305/2011 and to the rule EN 14688.
features	Countertop installation: the product can be installed on a table top of the customer, or it can be installed on a bracket wall mounted made of steel. White color. Smooth surface finish. Overflow not included. Waste coupling included, made of chrome-plated brass with always open tap made of white Corian. The products can be installed on a table top or on a bracket made of steel wall mounted.
size	560 x 355 x 180 mm
installation	Install on a table top using 4 screws M6 ( table top and screws not included ), or wall mounting with a specific bracket (not included, that you can order adding the code EVLASTA: bracket painted polished white ) using appropriate fasteners. Connect to the water drain. Check the solidity of the installation of the product, and make sure about a safely installation.
finishes	White color. Waste coupling with tap white painted.
maintenance	Check periodically the correct fixation of the washbasin. Clean only with neutral products, do not use aggressive or abrasive detergents; do not damage the surface.
materials	Cristalplant.

ST\_PRODOTTO: EVLACPBOU - REV. 01 of 10/03/2021 - 13/07/23 - APPROVED T.D.

product technical sheet



ST\_PRODOTTO: EVLACPBOU - REV. 01 of 10/03/2021 - 13/07/23 - APPROVED T.D.