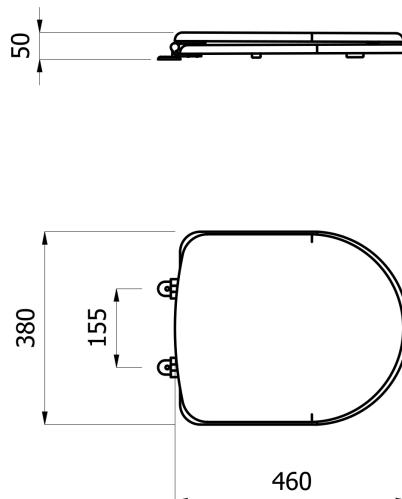


product technical sheet

collection	SENIOR 46
code	441
description	Wc seat with cover for art. 407.
certifications	TUV system certification UNI EN ISO 9001.
features	<p>Wc seat with cover for art. 407.</p> <p>Wood chipboard inside, covered with casting polyester thickness 2 mm. The polyester covering compared to superficial painting offers a better resistance to wear and this means a longer durability of the product. Hinges made of chrome plated brass.</p> <p>Expansion bolts.</p> <p>Nb: each seat is designed for a specific model of wc, an installation on different models of wc might not fit perfectly, causing an early break of the hinges. We suggest, for this reason, to use the wc seat that corresponds to each single model of wc.</p>
size	490 x 380 x 50 mm.
installation	Fissare al vaso tramite la apposita viteria in dotazione, avendo cura di stringere molto bene i fissaggi per evitare giochi. I paracolpi anteriori devono appoggiare al bordo del vaso, quelli posteriori devono rimanere sollevati di circa 3-4 mm.
finishes	White color
maintenance	<p>Fix through the specific screws supplied with the product, tacking care to tighten the fasteners very well in order to avoid slacks and damages to hinges.</p> <p>Clean with water and soap or other appropriate products, avoid aggressive or abrasive products. Dry with a soft cloth.</p>
materials	<p>Seat - Wood chipboard , casting polyester</p> <p>Hinges - Chrome plated brass</p> <p>Bumpers - linear polyethylene</p>

ST_PRODOTTO: 441 - REV. 01 of 29/04/2021 - 07/06/23 - APPROVED T.D.

product technical sheet



ST_PRODOTTO: 441 - REV. 01 of 29/04/2021 - 07/06/23 - APPROVED T.D.